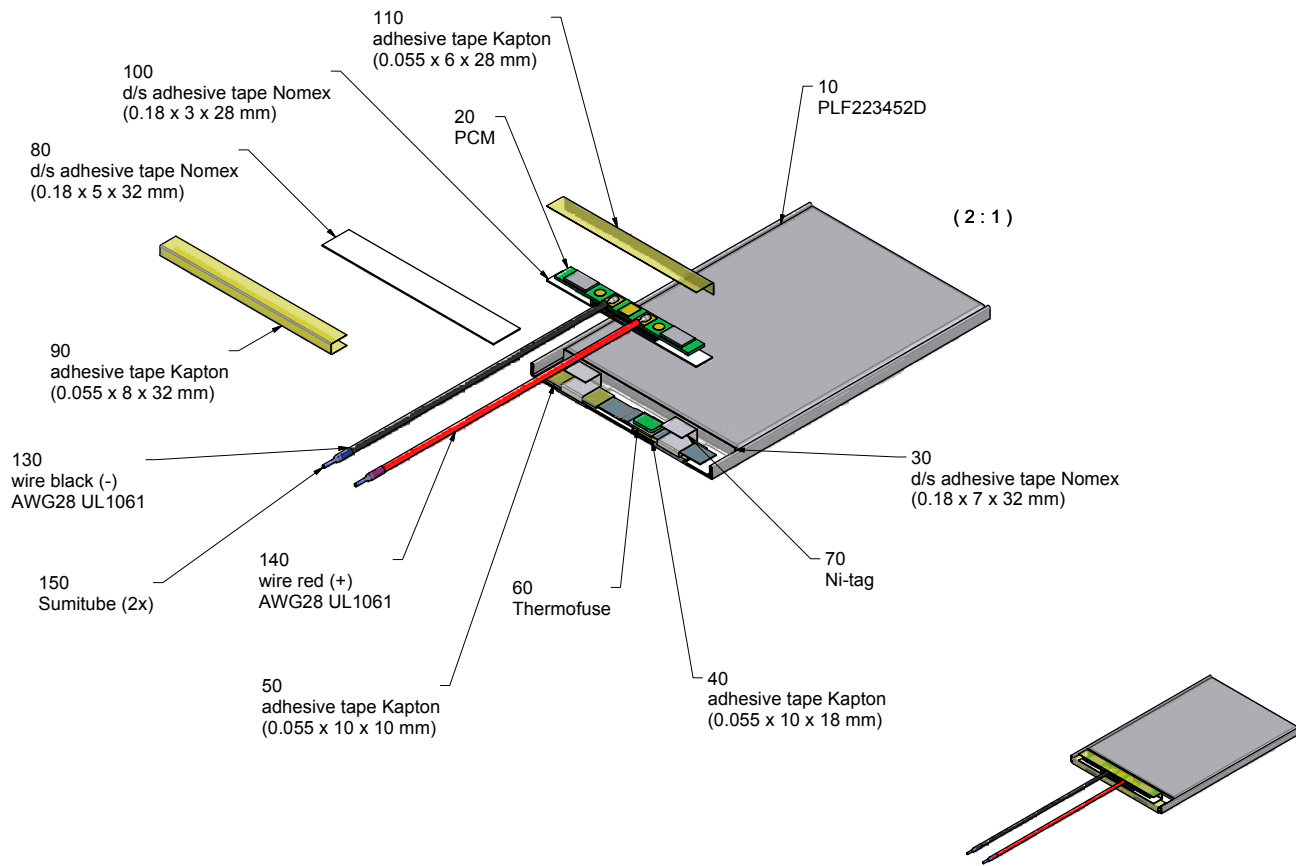


Preliminary Specification



1. General:

Battery with safety circuit and wires
 Cell: PLF 223452D
 PCM: PLFE-AA
 NTC: None
 ID: None
 Configuration: 1S
 Weight: approx. 8g

2. Electrical Specification:

Rated Capacity: 340 mAh min, 360 mAh typical
 Nominal Voltage: 3.7V
 Charging Method: Constant Current + Constant Voltage
 Max. Charge Voltage [V]: 4.20 (± 50 mV)
 Max. Continuous Charge Current: 340mA
 Rec. Charge cut off: 1/7 or timer 3h
 Max. Continuous Discharge Current: 680mA
 Rec. Discharge cut off: 3V
 Internal Impedance: appr. 300 mOhm
 Exp. Cycle Life: >500 cycles > 70% of initial cap.
Cell protection
 Overcharge Detection: 4.275 ± 0.025 V
 (0.7 to 1.3 sec. delay, resume 4.275 ± 0.025 V)
 Overdischarge Detection: 2.30 ± 0.058 V
 (14 to 26 msec. delay, resume 2.30 ± 0.058 V)
 Overcurrent Detection: 2.0 A to 4.0 A (8 to 16 msec. delay @discharge)
 2.0 A to 4.0 A (11 to 21 msec. delay @charge)

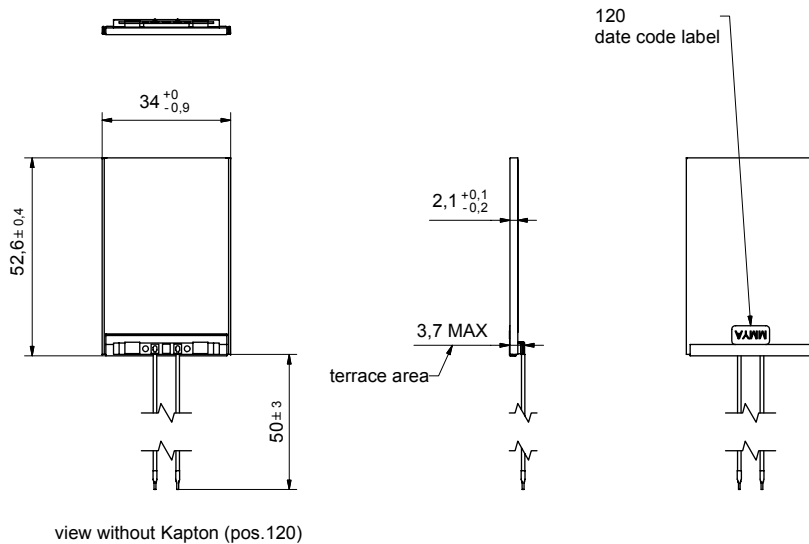
3. Ambient Conditions

Temperature Range
 - Charge: 0 to +45°C
 - Discharge: -20 to +60°C
 - Charge Retention/Storage [%]: 1 year at -20 to +20°C >80%
 3 month at -20 to +45°C >80%
 1 month at -20 to +60°C >80%

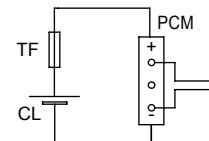
Humidity: $65 \pm 20\%$ RH

4. Environmental and Safety

Please follow VARTA Handling and Safety Precautions for Lilon & LiPolymer.
 The cell is approved according UL 1642.
 The battery is compliant to ROHS.



Circuit diagram



01 Wires changed from AWG28 UL1007 to AWG28 UL1061		03.04.2008	H.Schnirch
Index	Änderung / Alteration	Date	Name
Projection:	Frümaßtoleranzen General tolerances	Diese Maße werden besonders geprüft This dimensions are considered inspectable	
Maße in mm All dimensions in mm	up to 6 ± 0.1	Maßstab / Scale 1:1 (2:1)	
Als Betriebsgehäuse anvertraut, alle Rechte vorbehalten.	over 6 up to 30 ± 0.2	Date	Name
Proprietary data, company confidential, all rights reserved.	over 30 up to 100 ± 0.3	15.03.2007	H.Schnirch
	over 100 ± 0.5	03.04.2008	H.Schnirch
Beneennung / Designation		1/PLF223452D PCM.LT50	
Zöhlung / Dwg.Nr.		2 KE_1759_00	
VARTA Microbattery		Index 01	
mobility for you			
Origin:	repl.: G.Hadlik	repl. by:	Alloc:

In Arbeit